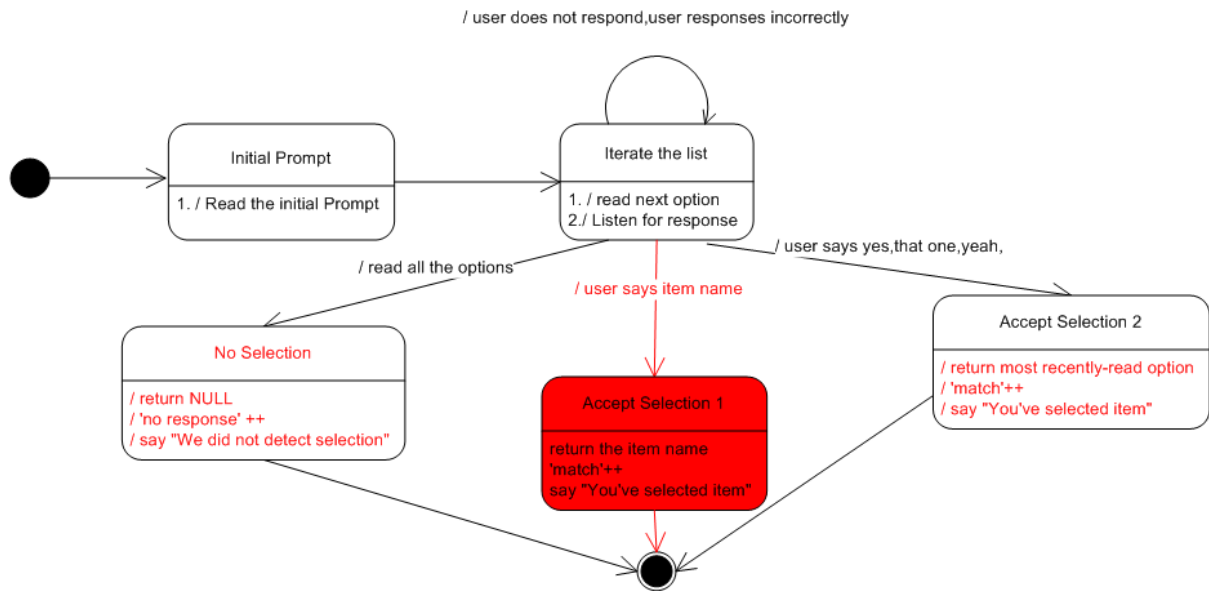
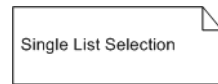


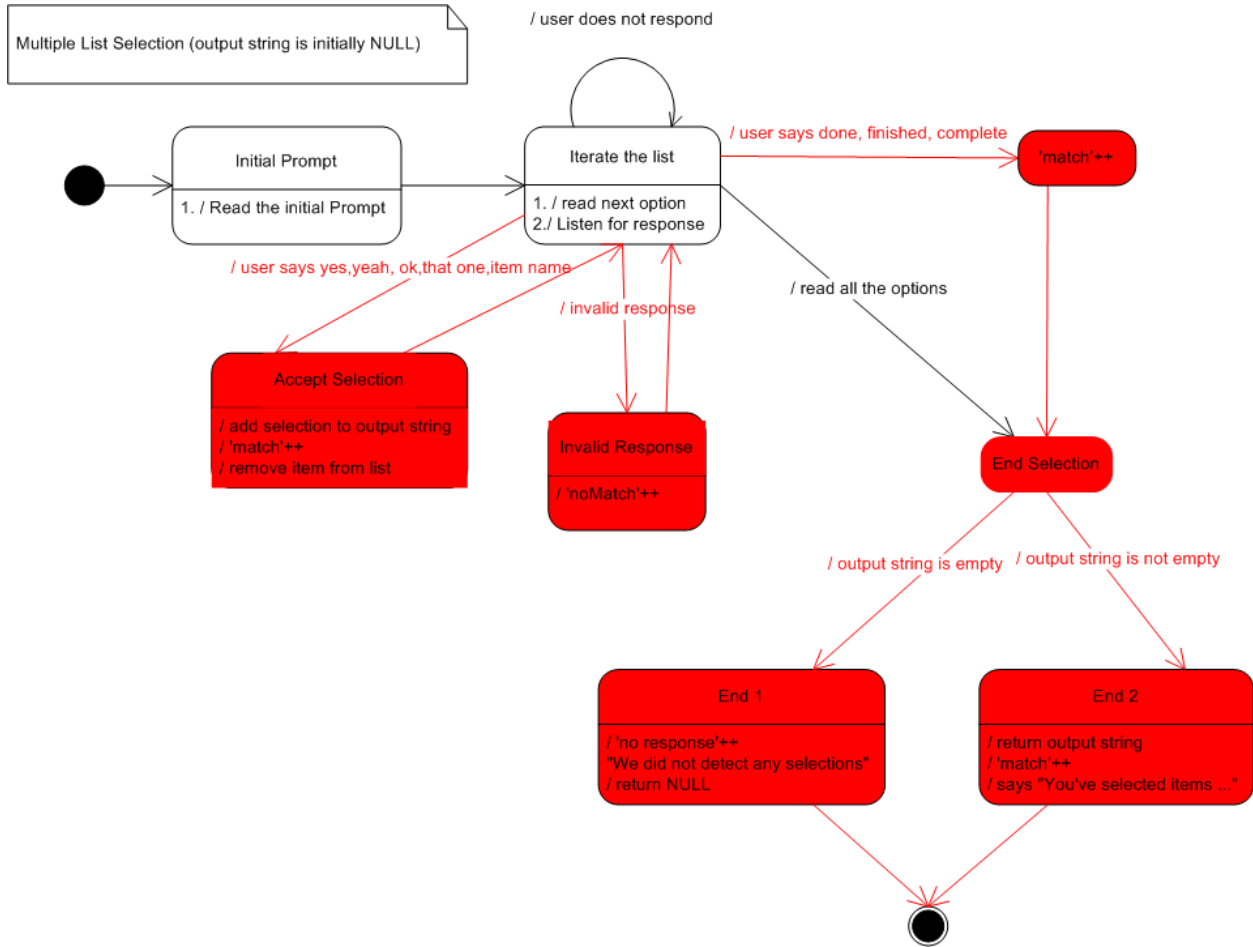
Phase 2

1,

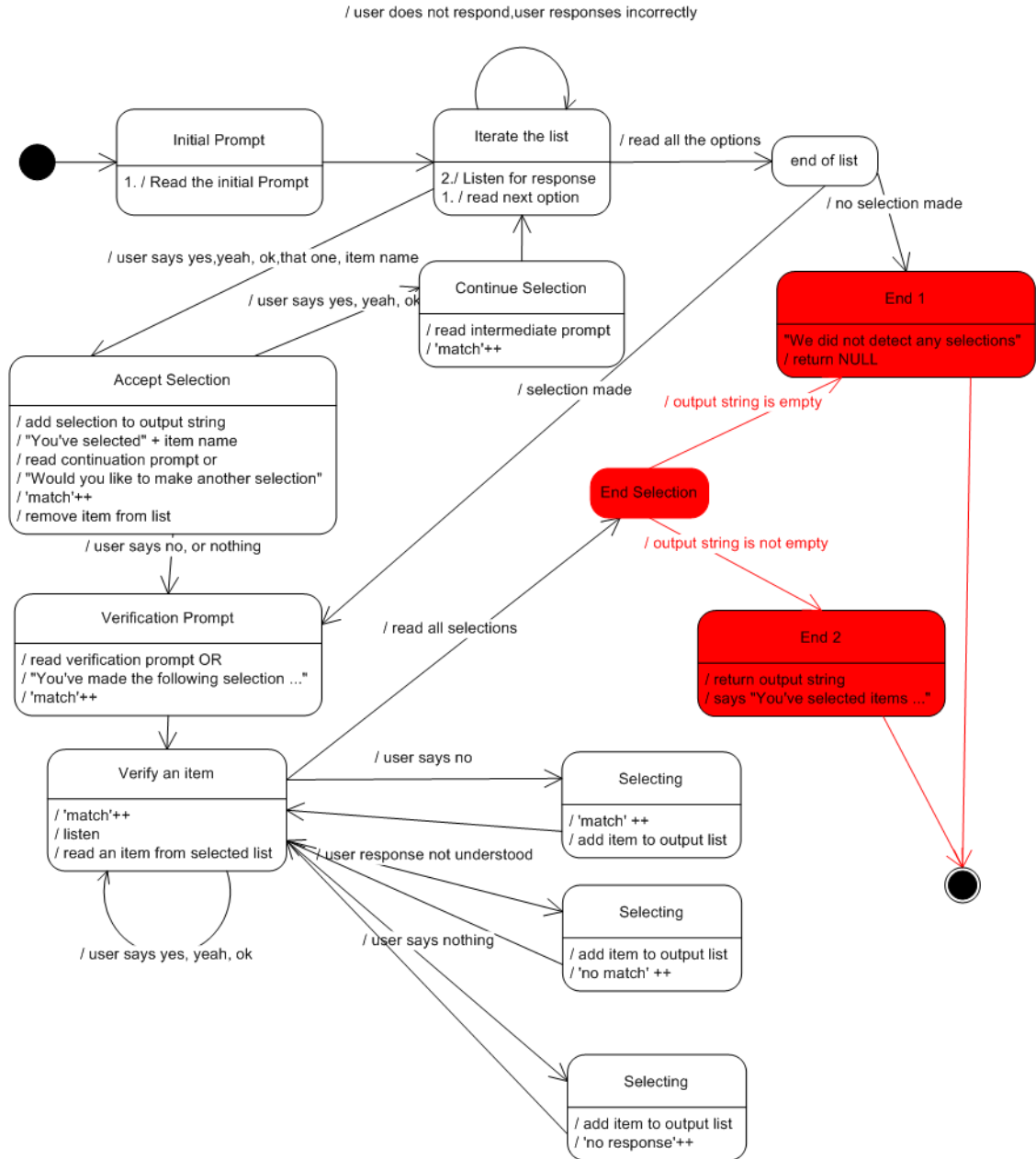


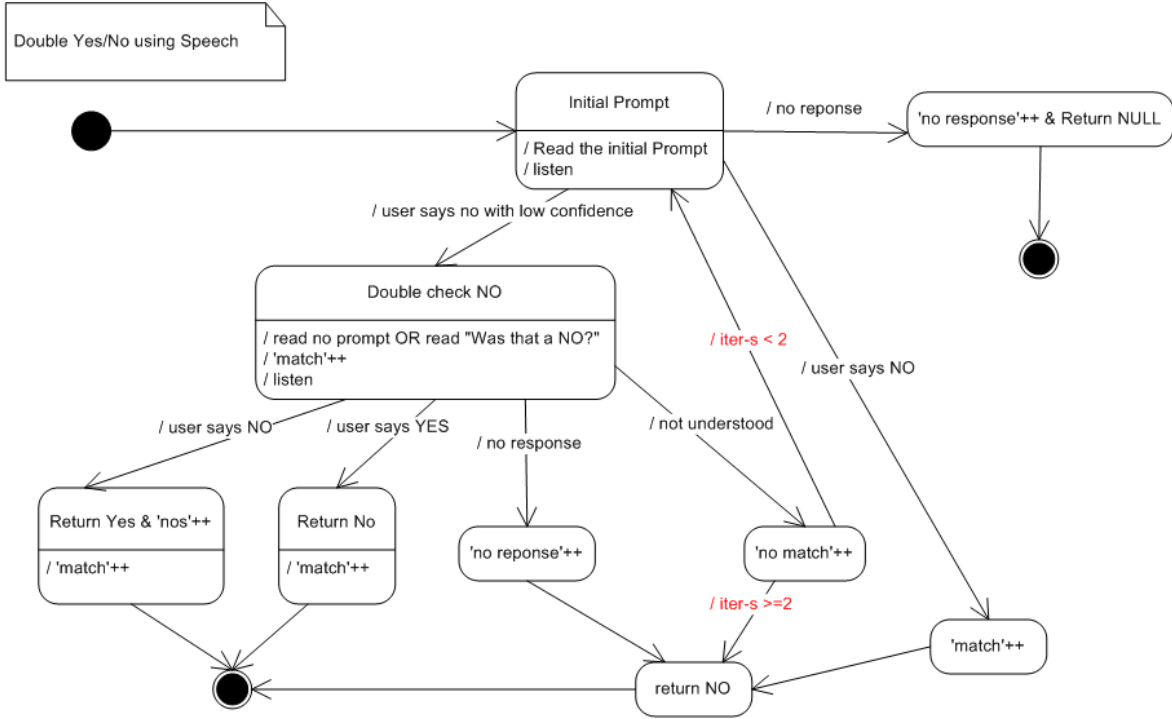
Note: Each time NULL is returned, say "We did not detect any selections".

2

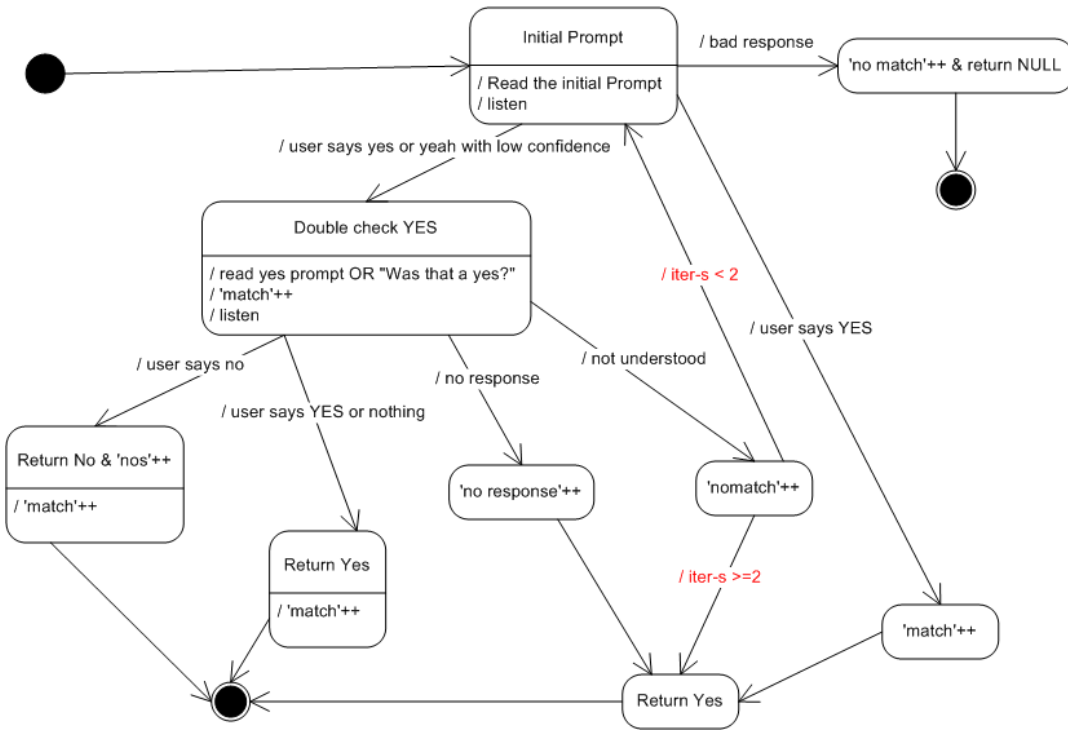


Multiple List Selection with Deselecting (output string is initially NULL)

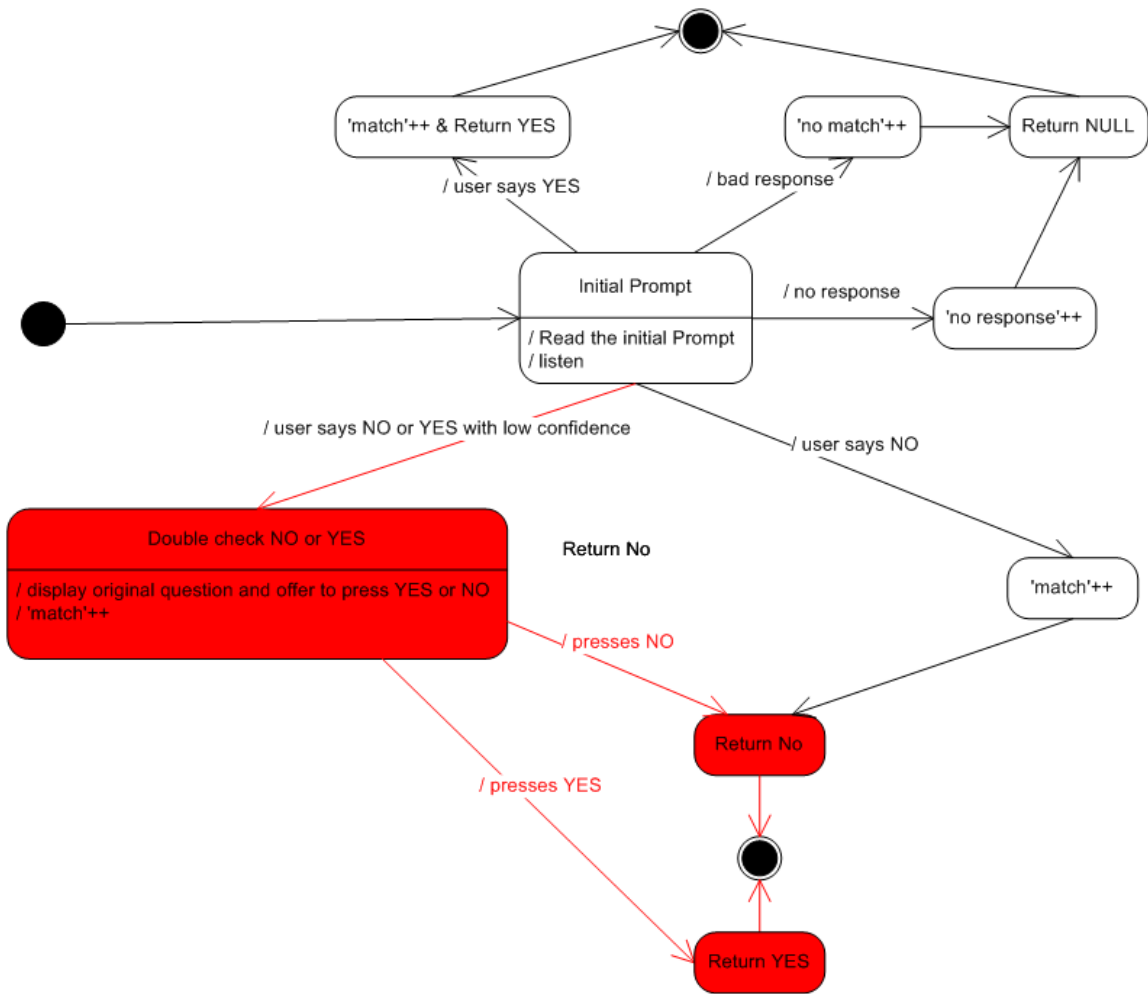




NOTE: When Yes or NO is returned, the user selection is verbally confirmed

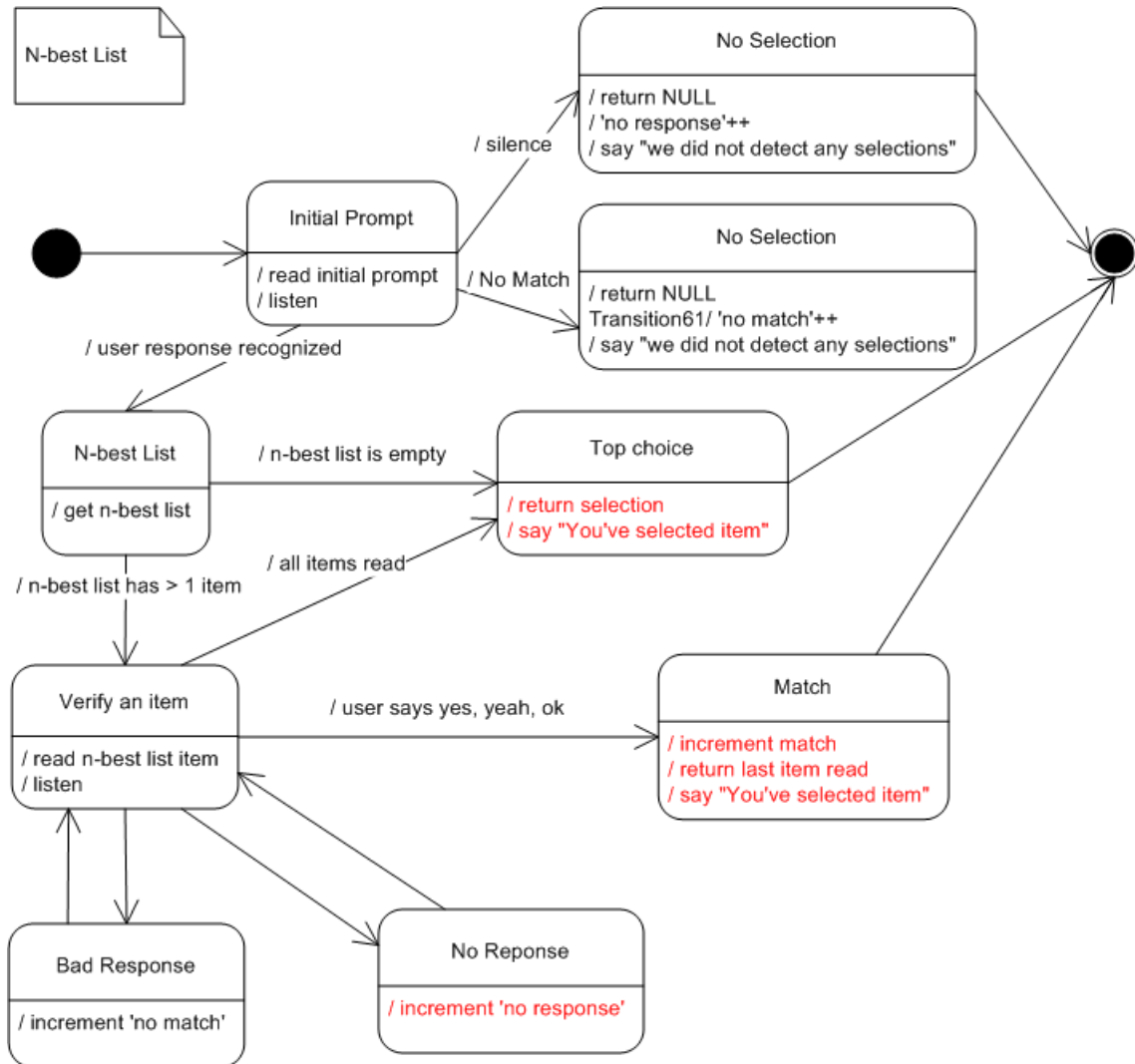


Double Yes/No using DTMF



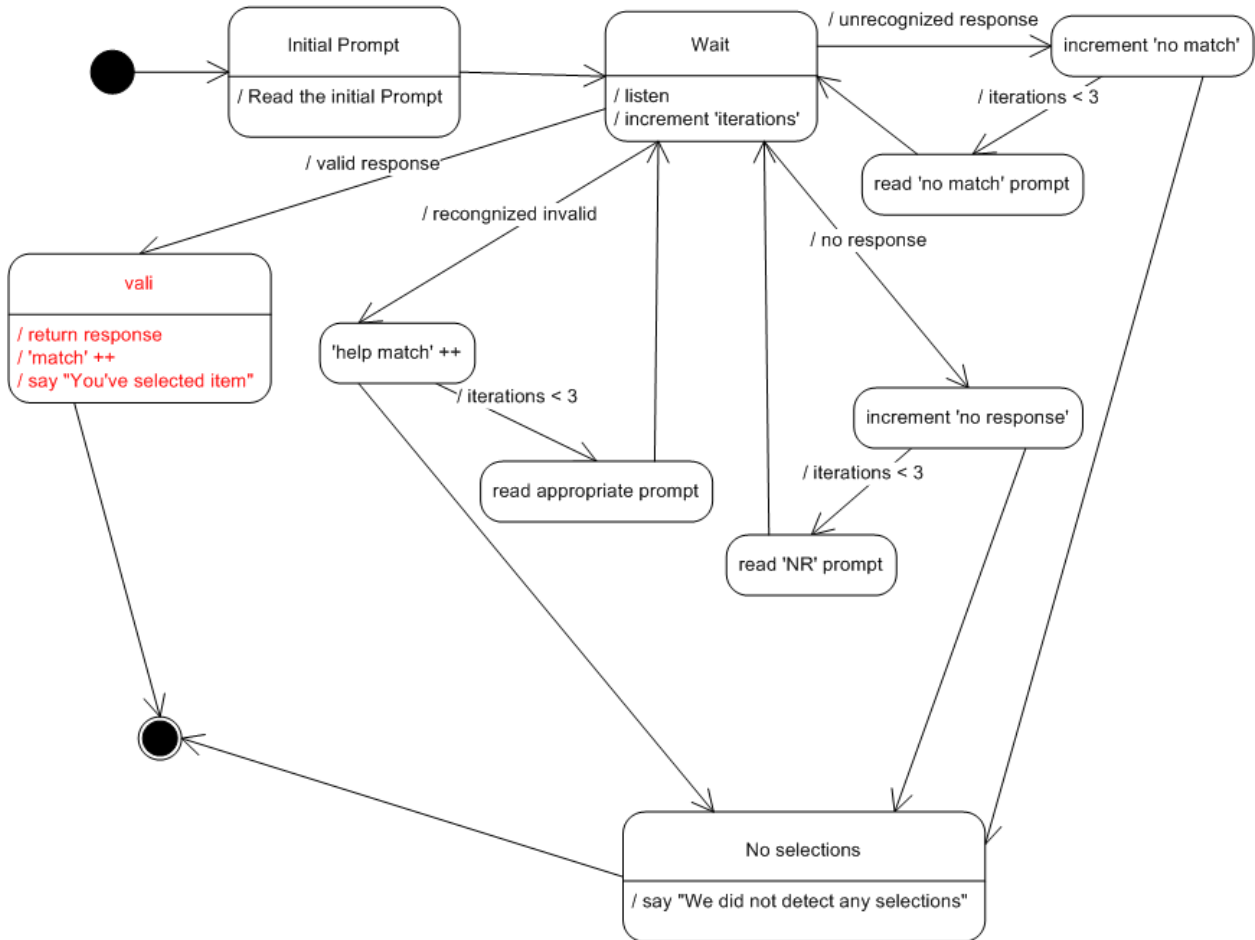
NOTE: When Yes or NO is returned, the user selection is verbally confirmed

6,



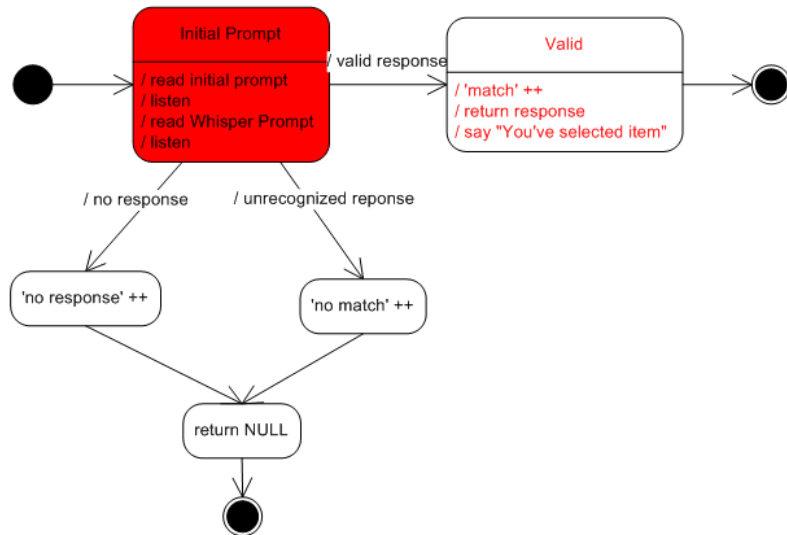
8,

Context-Sensitive Help Prompt

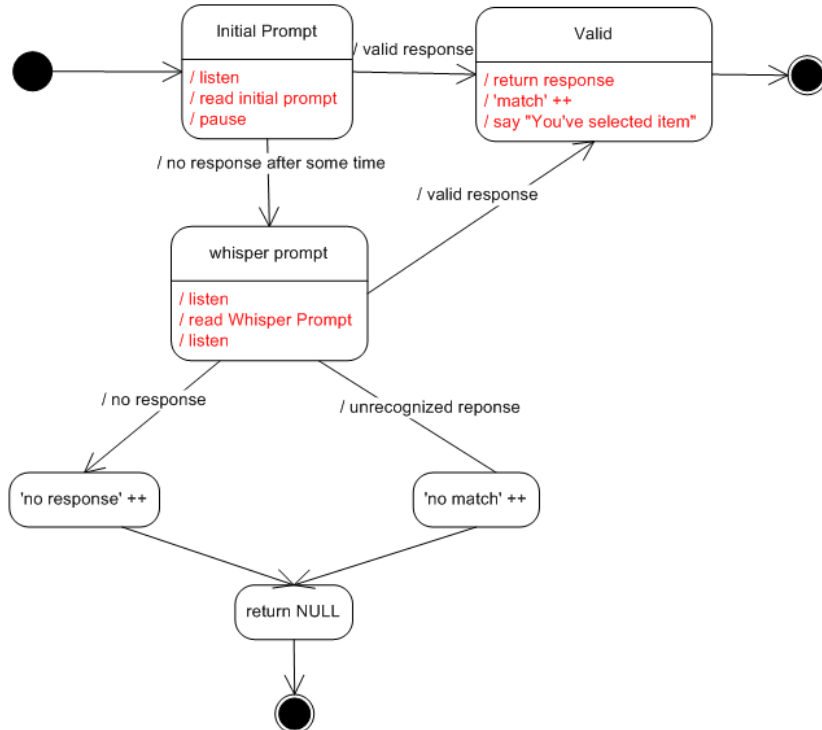


9A.9B

Wisper Prompt 9.A



Wisper Prompt 9.B



Note: Each time NULL is returned, say "We did not detect any selections".