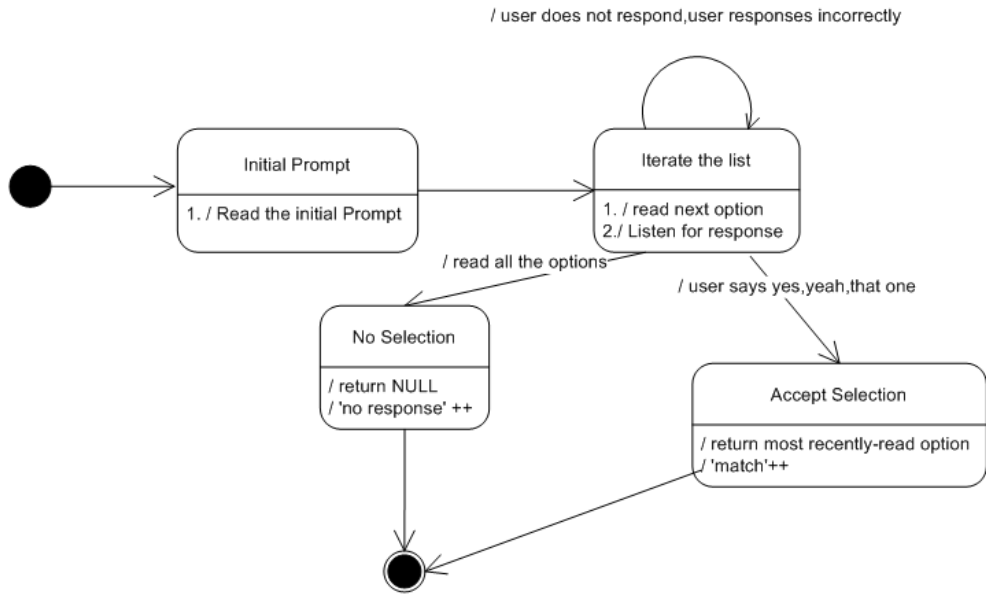


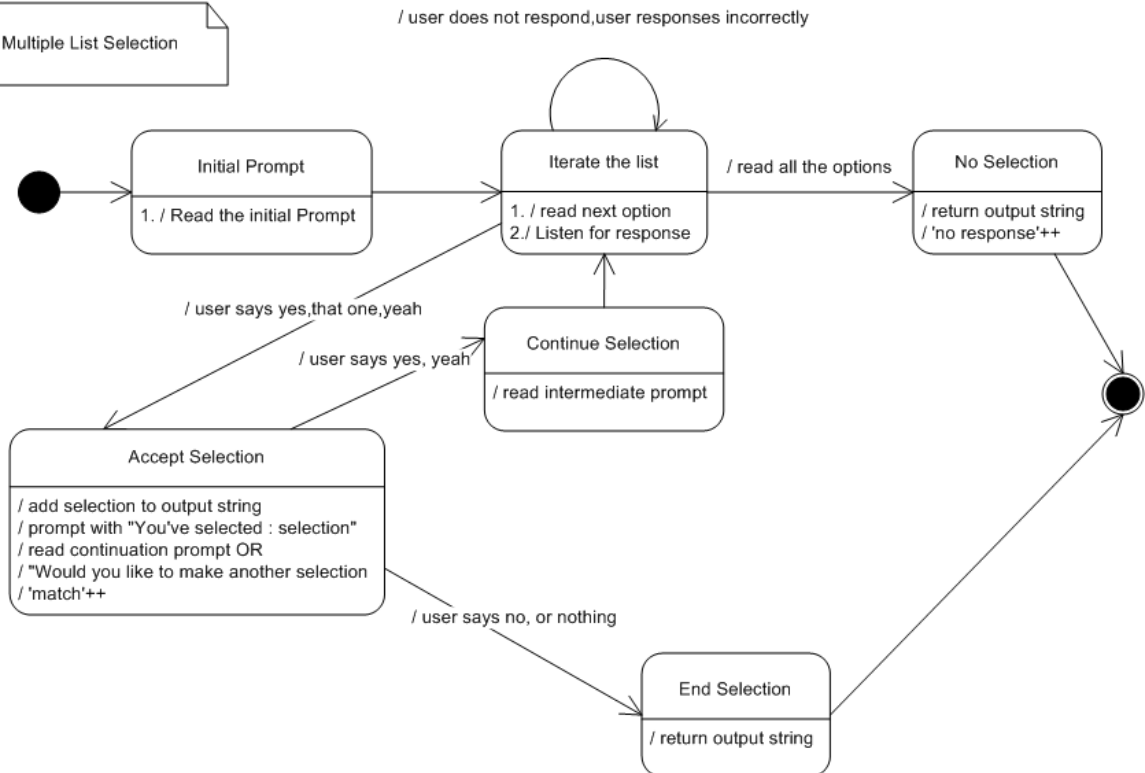
Phase 1

1, 2

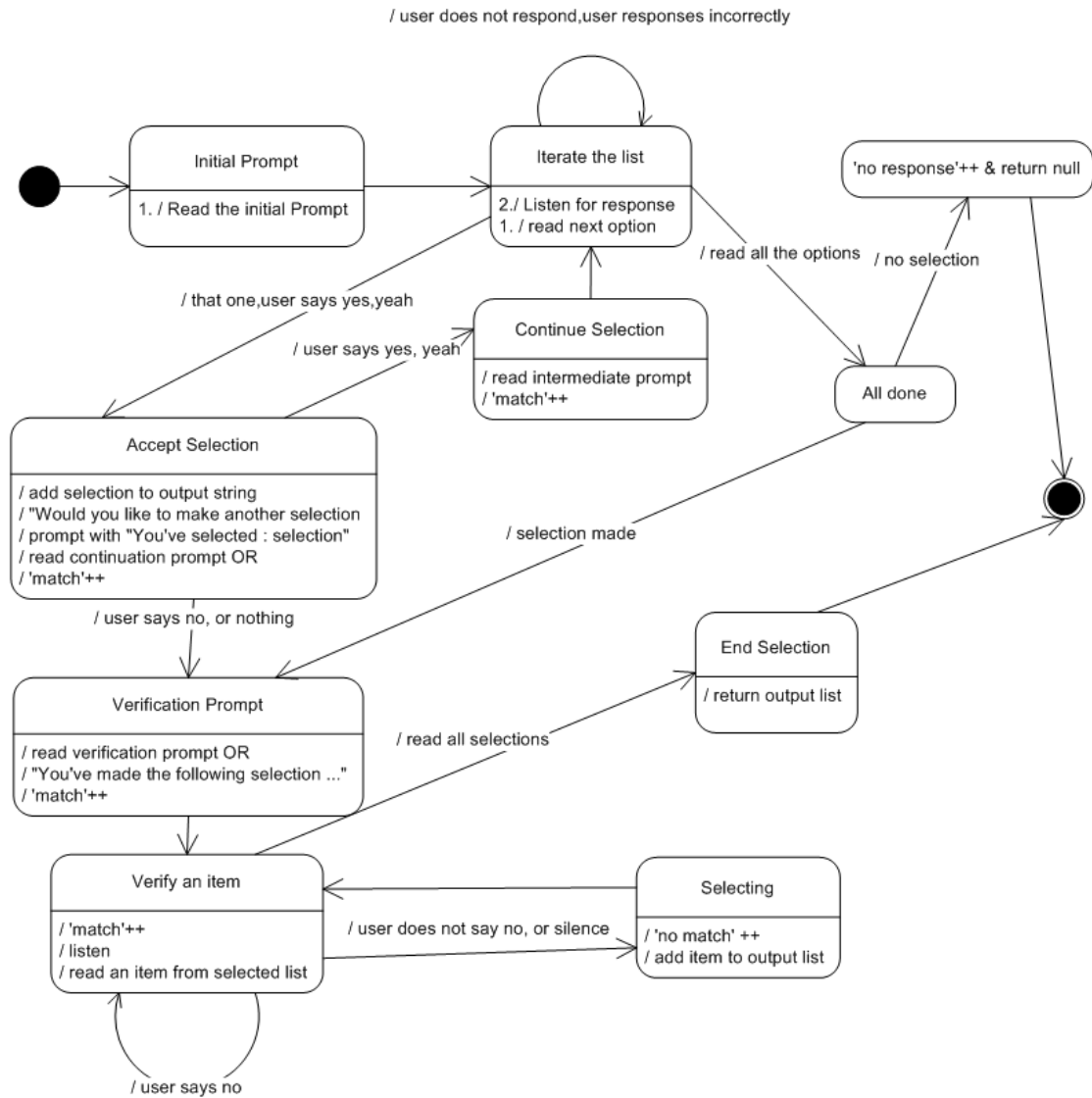
Single List Selection

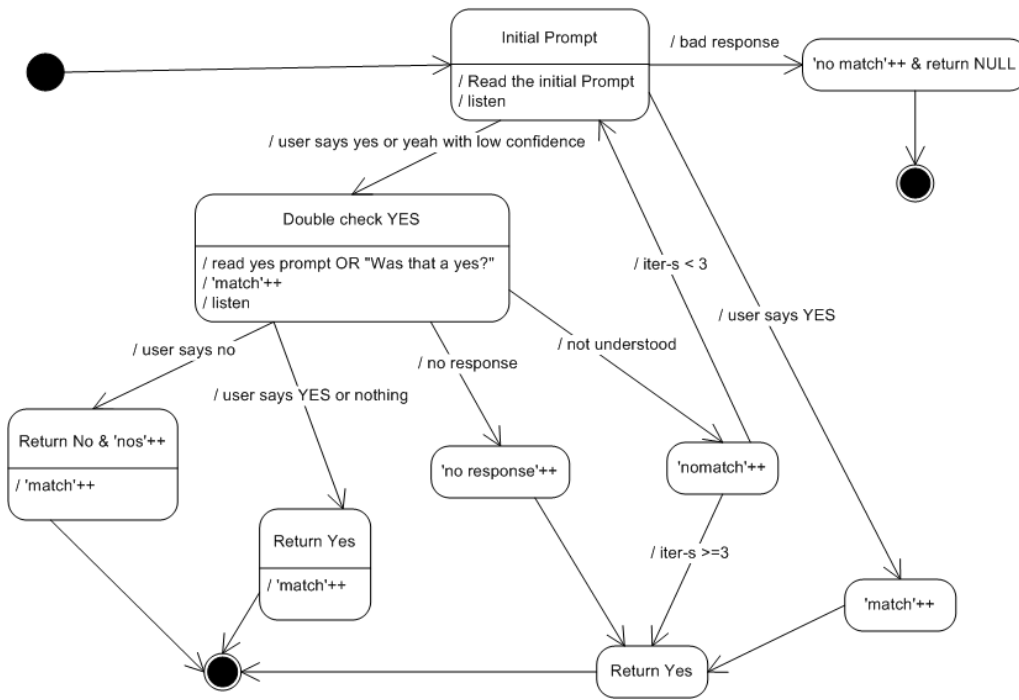
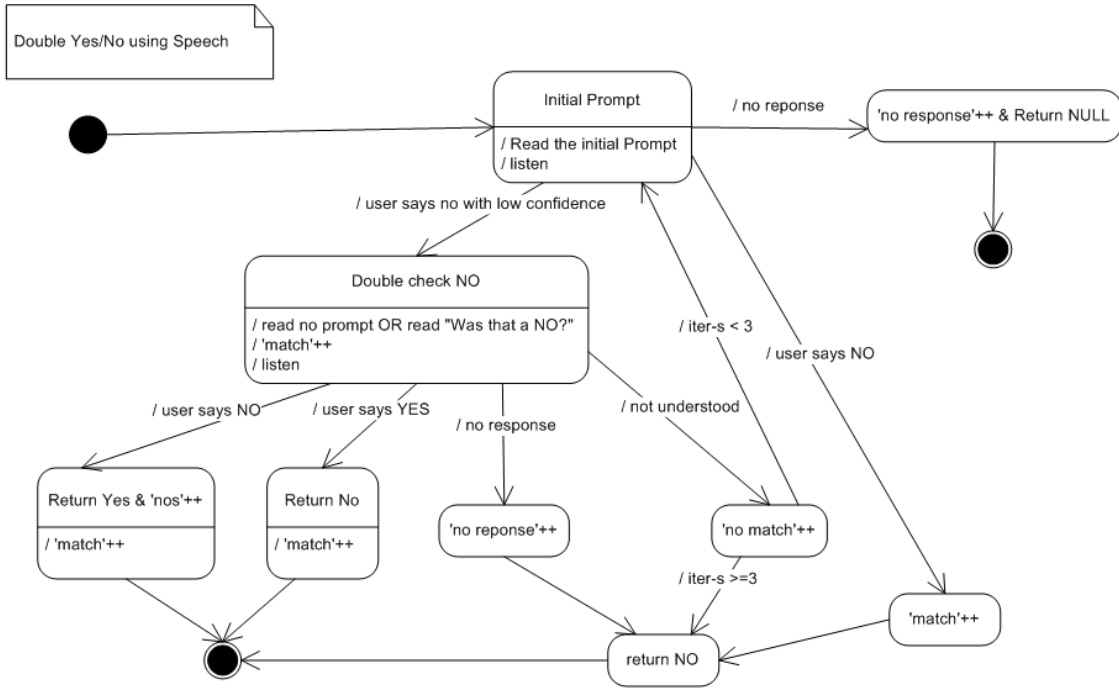


Multiple List Selection

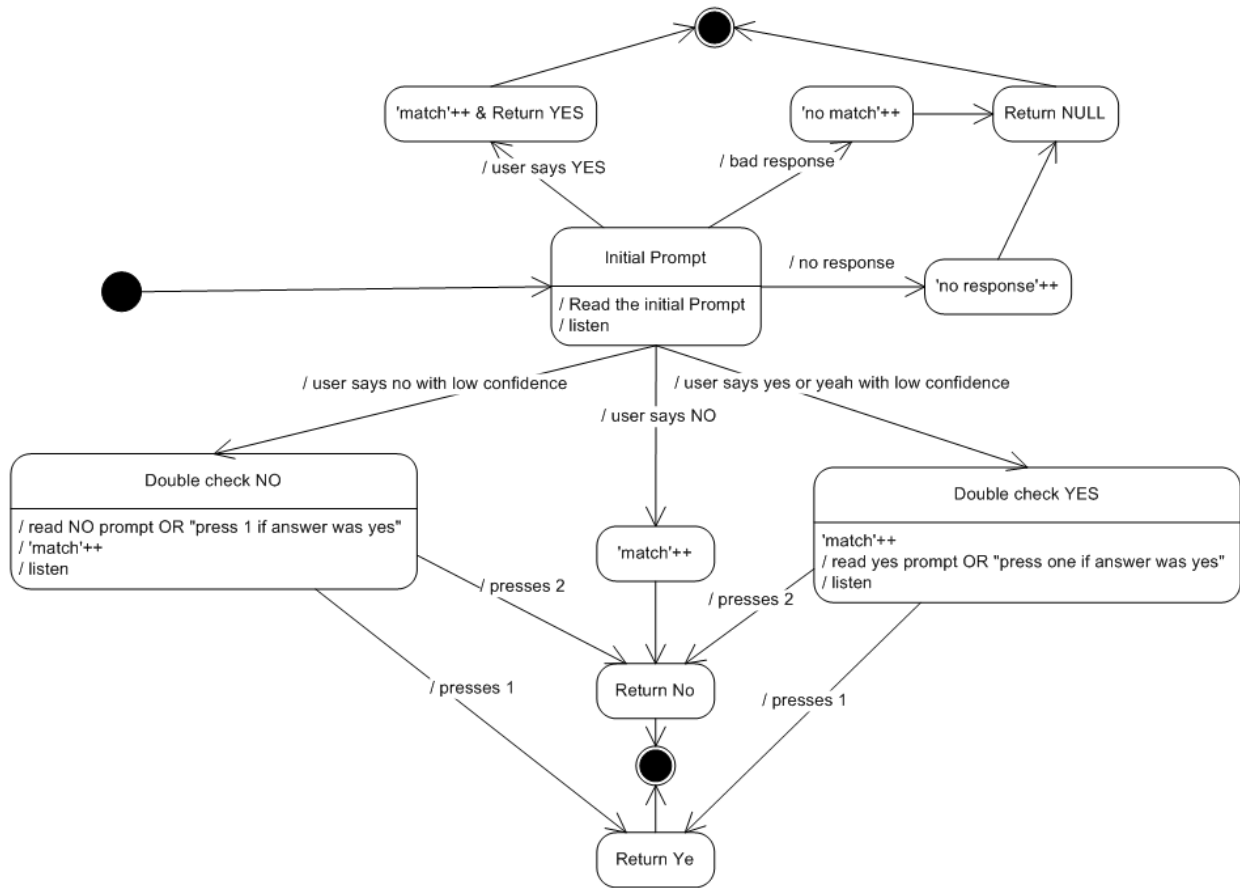


Multiple List Selection with Deselecting (output string is initially NULL)

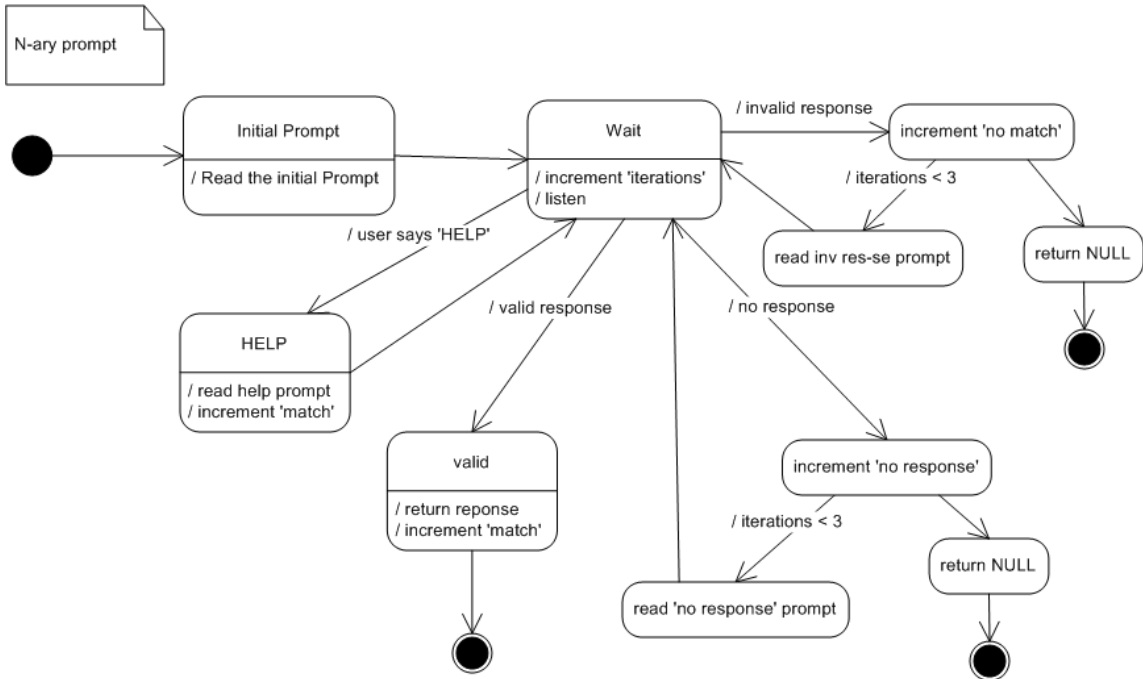
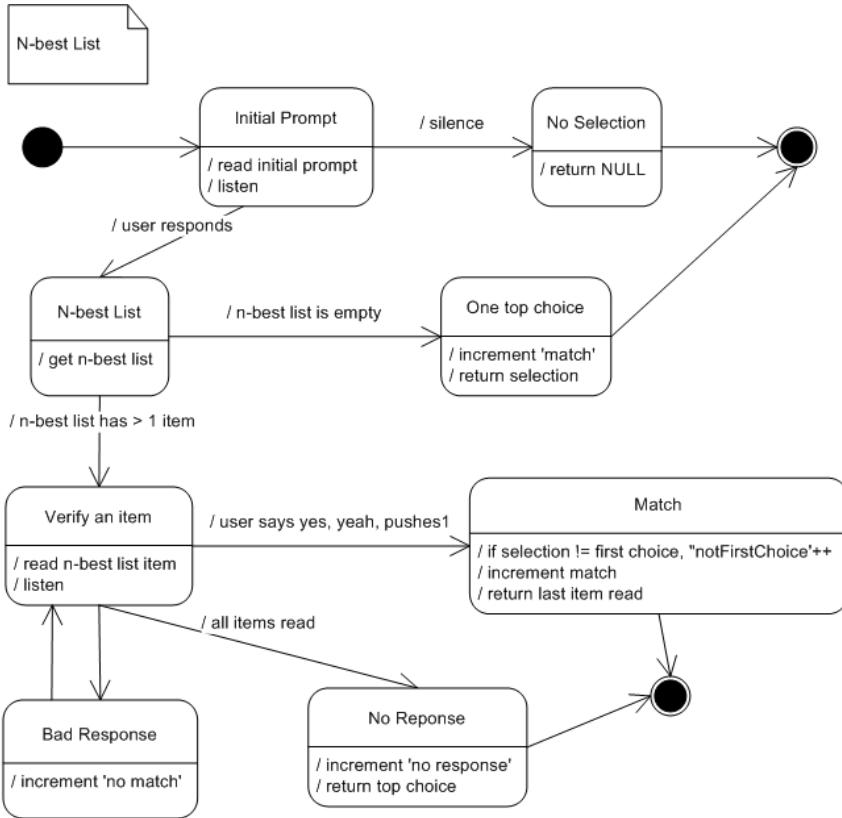




Double Yes/No using DTMF

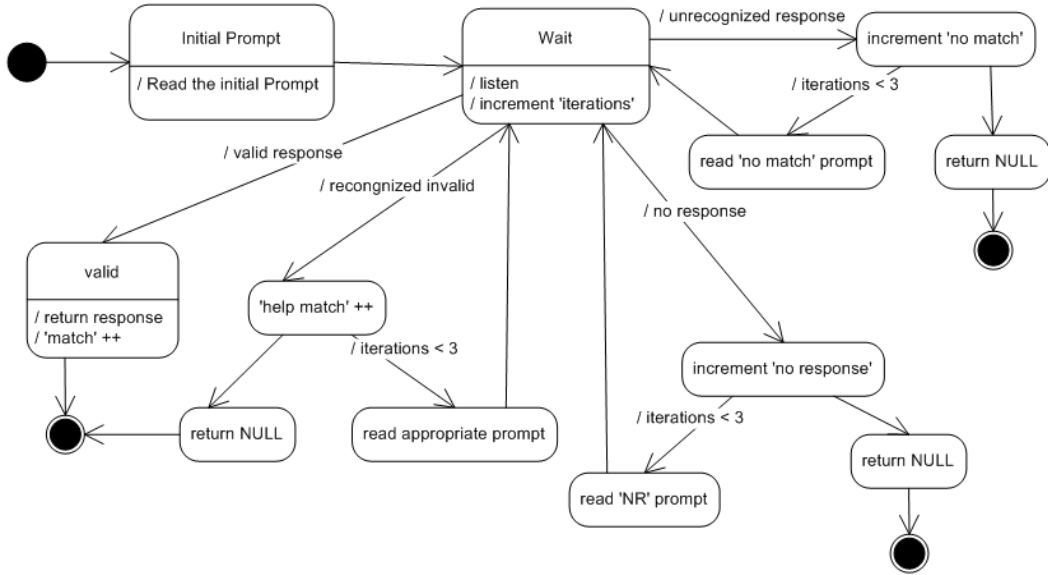


6, 7

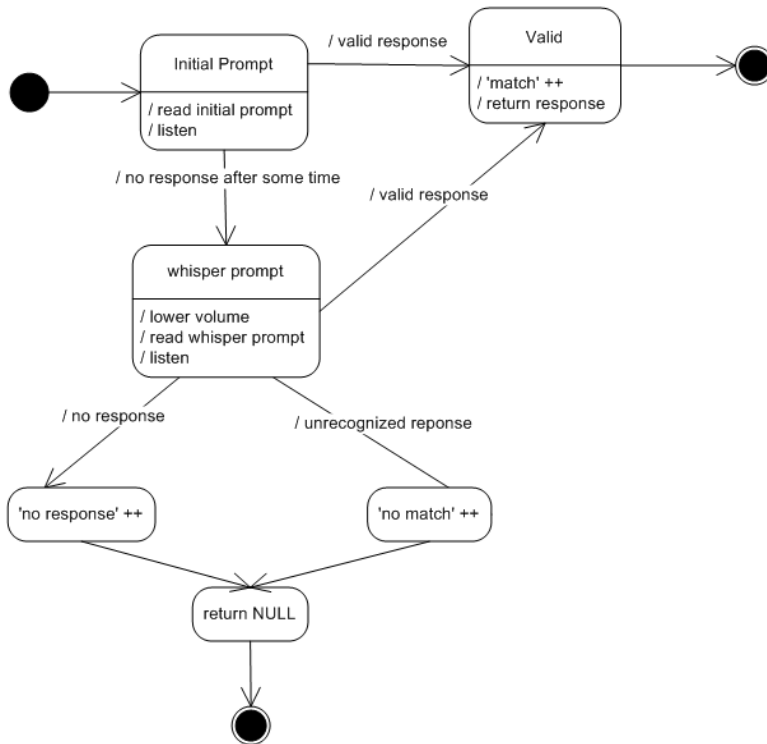


8, 9

Context-Sensitive Help Prompt

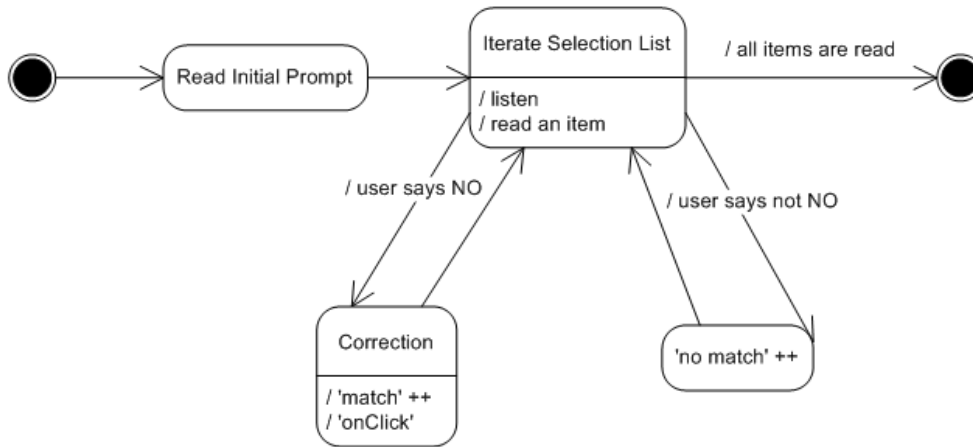


Wisper Prompt



10,11

Confirmation and Correction Dialogue after all selections



Volume Adjuster

